



JEDERMANN

Fahrzeugleuchten

CONTROLmann

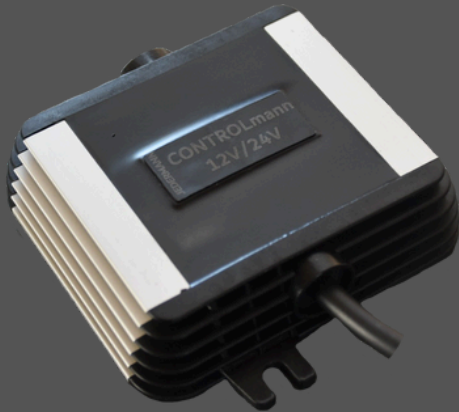


Accurate load
simulation ensuring
fault-free indicator
operation



JEDERMANN

Fahrzeugleuchten



CONTROLmann

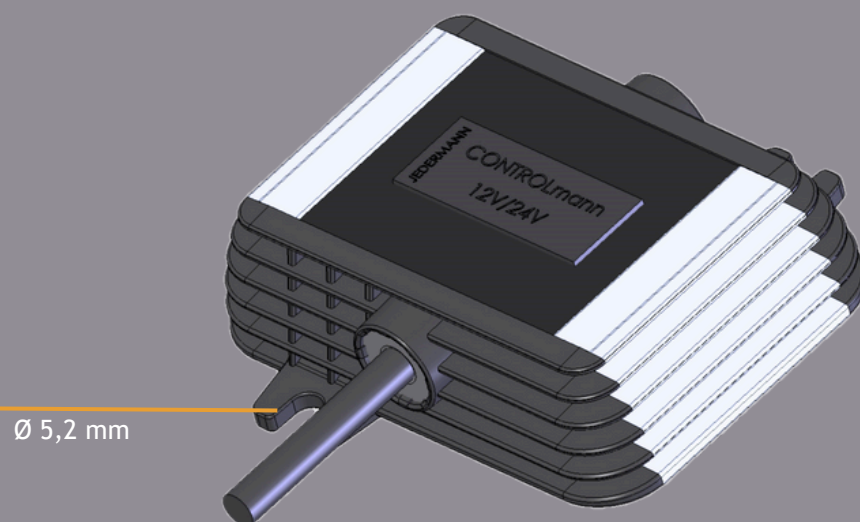
Description

The CONTROLmann module is a high-performance control and ballast unit for LED vehicle lighting. When an LED indicator draws a current of 30 mA or more, the module activates an additional load that simulates the behavior of a conventional 21 W incandescent bulb.

The module is bivoltage and designed for both 12 V and 24 V systems, enabling flexible use across a wide range of vehicle types.

For optimal performance, the CONTROLmann module should be mounted on a metallic surface with sufficient airflow. Operating temperatures above 70 °C should be avoided to ensure long-term reliability.

Characteristics



ADR approved



Protection class IP6K9K



Certified according to UNECE regulations No. 10



Customizable cable length and connector options



Voltage range 10 V to 30 V



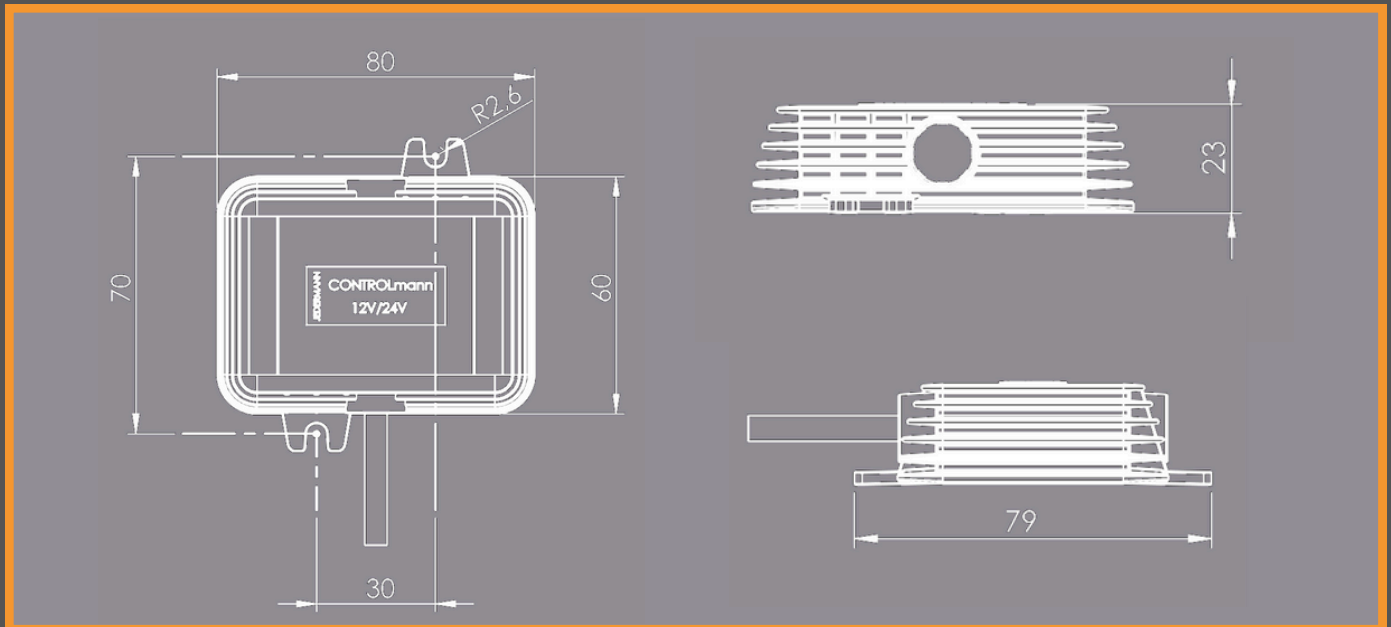
Operating temperature range: -30 °C to +60 °C



JEDERMANN

Fahrzeugleuchten

Technical drawing



Versions



Article number

Cable length

M003-000-001

0,5 m



Hauptstraße 33
56291 Hausbay



Jedermann AG
info@jedermann-ag.de



06746-208