

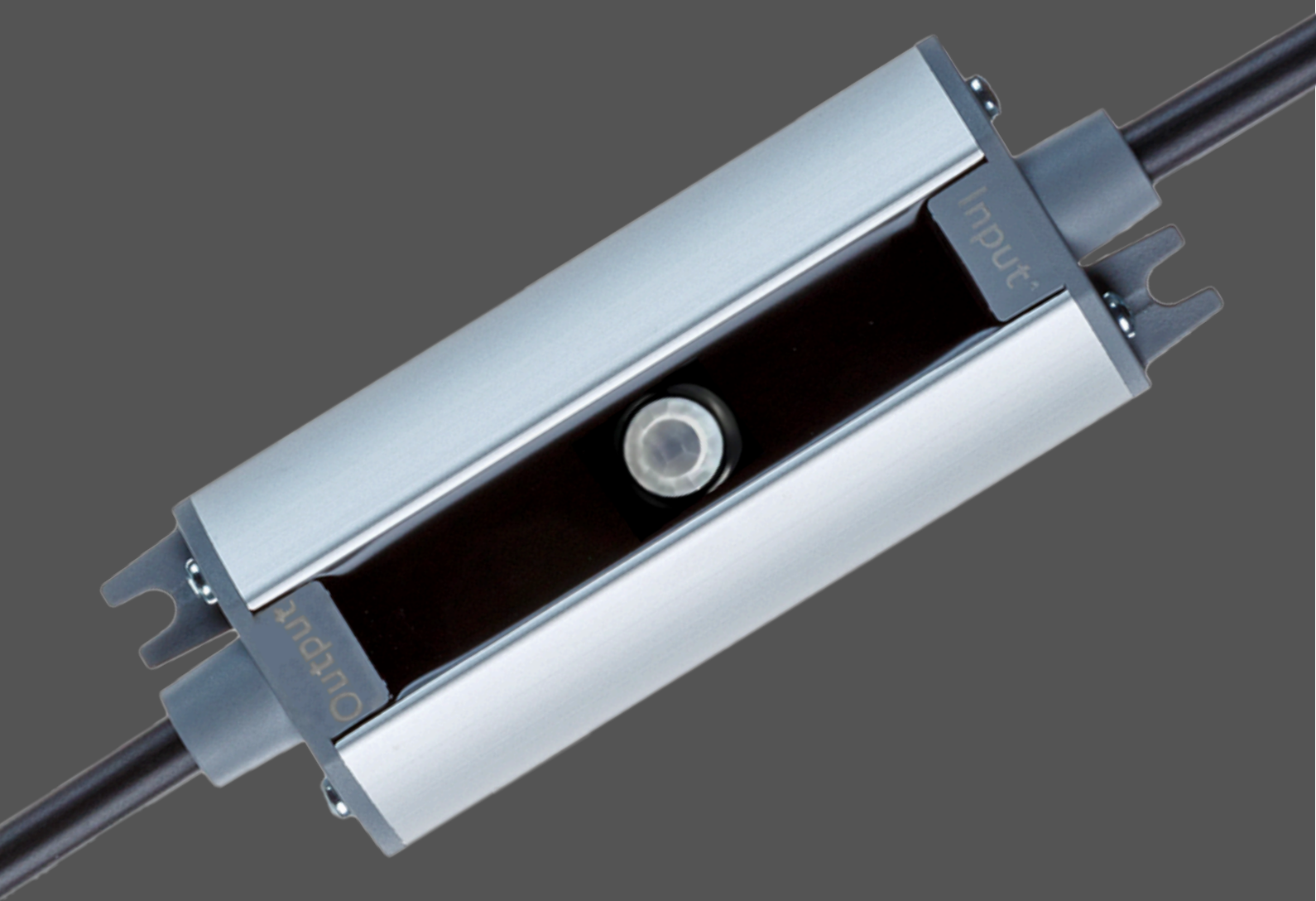


JEDERMANN

Fahrzeugleuchten

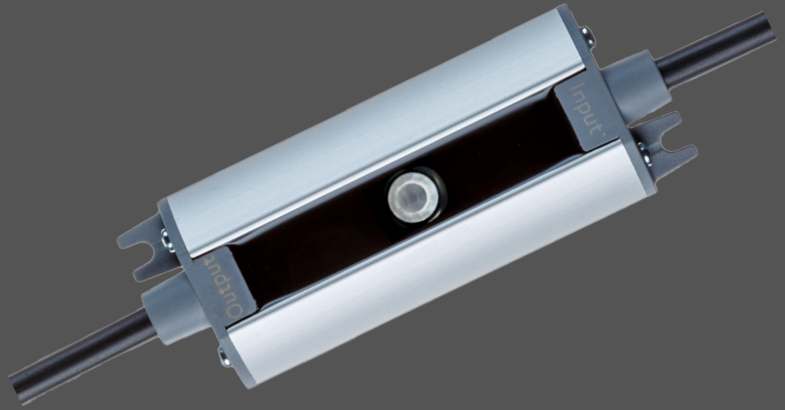
# PIRmann

---



Efficient lighting  
activated by  
motion

# PIRmann



## Description

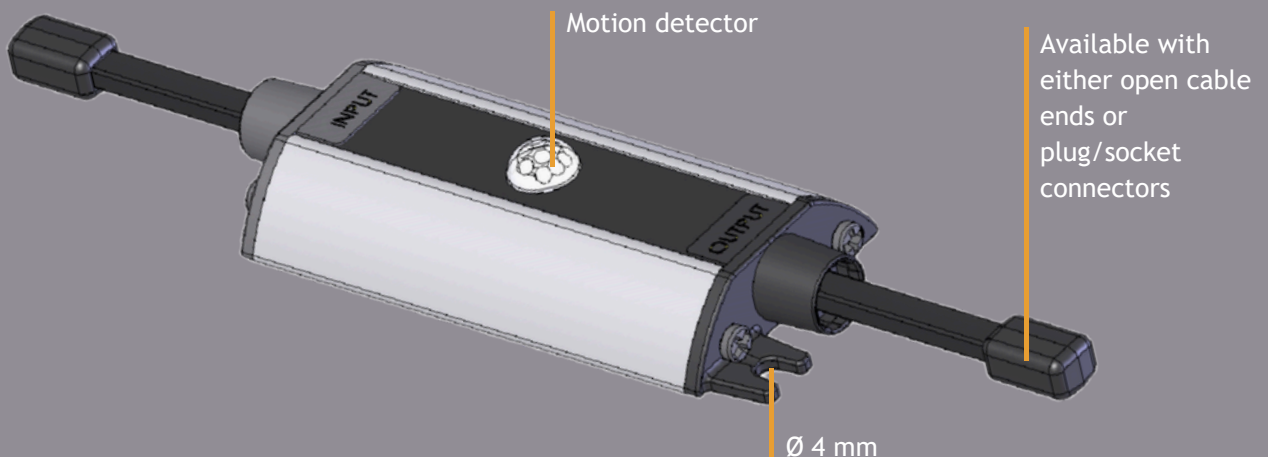
The PIRmann module is a central PIR motion sensor with a maximum switching current capacity of 5 A.

After applying power, the module is operational within 2 seconds, during which the connected lights briefly illuminate and then turn off again.

Once motion is detected, the module switches the connected lights on for approximately 20 seconds. If additional motion is detected within this period, the lighting duration is automatically extended by another 20 seconds.

The lights are connected easily and securely via P2G connectors.

## Characteristics



ADR approved



Protection class IP6K9K



Certified according to UNECE regulations  
No. 10



Customizable cable length and connector options



Voltage range 10 V to 30 V



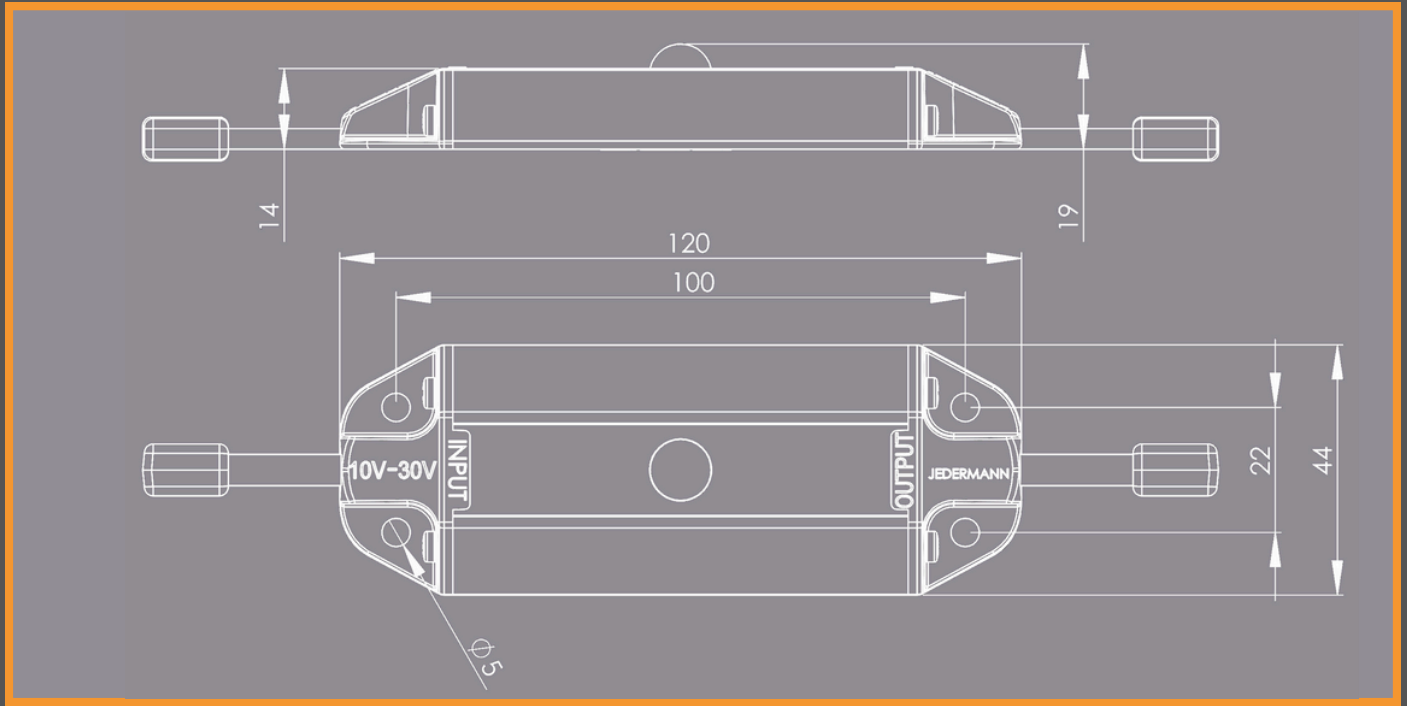
Operating temperature range: -30 °C to +60 °C



JEDERMANN

Fahrzeugleuchten

## Technical drawing



## Version



Article number	Input cable length	Output cable length
M004-000-001	0,5 m	1 m



Hauptstraße 33  
56291 Hausbay



Jedermann AG  
info@jedermann-ag.de



06746-208